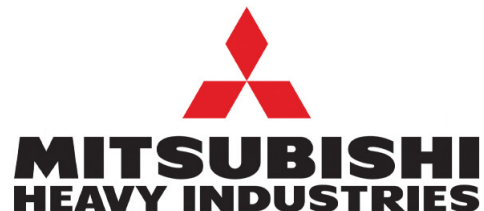


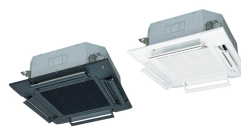


TEMPERATURE CONTROL FOR TODAY & TOMORROW



FDT100VNPWVH

10.0 KW



Unitate internă : FDT100VH



Unitate externă : FDC100VNP-W

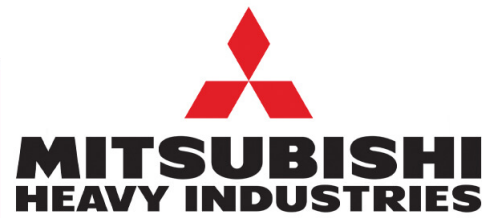
Specificații tehnice

R32

Unitate internă			FDT100VH
Unitate externă			FDC100VNP-W
Sursă de alimentare			Monofazic 220-240V, 50Hz / 220V, 60Hz
Capacitate nominală de răcire (Min~Max)		kW	10.0 (2.1 ~ 10.2)
Capacitate nominală de încălzire (Min~Max)		kW	10.0 (1.7 ~ 10.4)
Consumul de energie	Racire/Încalzire	kW	2.84 / 2.33
EER/COP	Racire/Încalzire		3.52 / 4.29
Curent de intrare		A	5
Amperaj maxim		A	19
Nivel putere sonoră*1	U.I.	Racire/Încalzire	62 / 62
	U.E.	Racire/Încalzire	68 / 67
Nivel presiune sonoră*1	U.I.	Racire (Hi/Me/Lo/Ulo)	47 / 39 / 36 / 30
		Încalzire (Hi/Me/Lo/Ulo)	47 / 39 / 36 / 29
	U.E.	Racire/Încalzire	56 / 54
Flux de aer	U.I.	Racire (Hi/Me/Lo/Ulo)	37 / 26 / 23 / 17
		Încalzire (Hi/Me/Lo/Ulo)	37 / 26 / 23 / 17
	U.E.	Racire/Încalzire	75 / 79
Dimensiuni exterioare	U.I.	Înălțime x Latime x Adâncime	Unitate: 298 x 840 x 840 Panou: 35 x 950 x 950
	U.E.		845 x 970 x 370
Greutate netă	U.I. / U.E.	kg	30 (Unitate:25 Panou standard:5) / 57
Refrigerant	Tip/GWP		R32/675
Refrigerant	Încarcare	kg/TCO2Eq	1.7/1.148
Dimensiuni țevă refrigerant	Lichid/Gaz	ø mm	6.35(1/4") / 15.88(5/8")
Lungime teava refrigerant (o direcție)		m	Max.30
Diferența de nivel suportată	Unitate externă este mai sus/măi jos	m	Max.20 / Max.20
Interval de funcționare - temperatura exterioară	Racire*2	°C	-15~46
	Încalzire		-15~20
Panou			T-PSA-5BW-E, T-PSAE-5BW-E (Alb) / T-PSA-5BB-E, T-PSAE-5BB-E (Negru)
Filtru de aer			Filtru lavabil x 1(Lavabil)
Telecomandă (opțional)			Cu fir: RC-EX3A, RC-E5, RCH-E3 Fara fir: RCN-T-5BW-E2, RCN-T-5BB-E2
Clasa energetică (Racire/Încalzire)			A++/A+
SEER			7.08
SCOP (Climat temperat)			4.53
Pdesign (racire/încalzire(@-10°C))		kW	10.0/6.4
Consumul anual de electricitate (racire/încalzire)		kWh/a	495/1977
Performanța în modul Încalzire			Medie

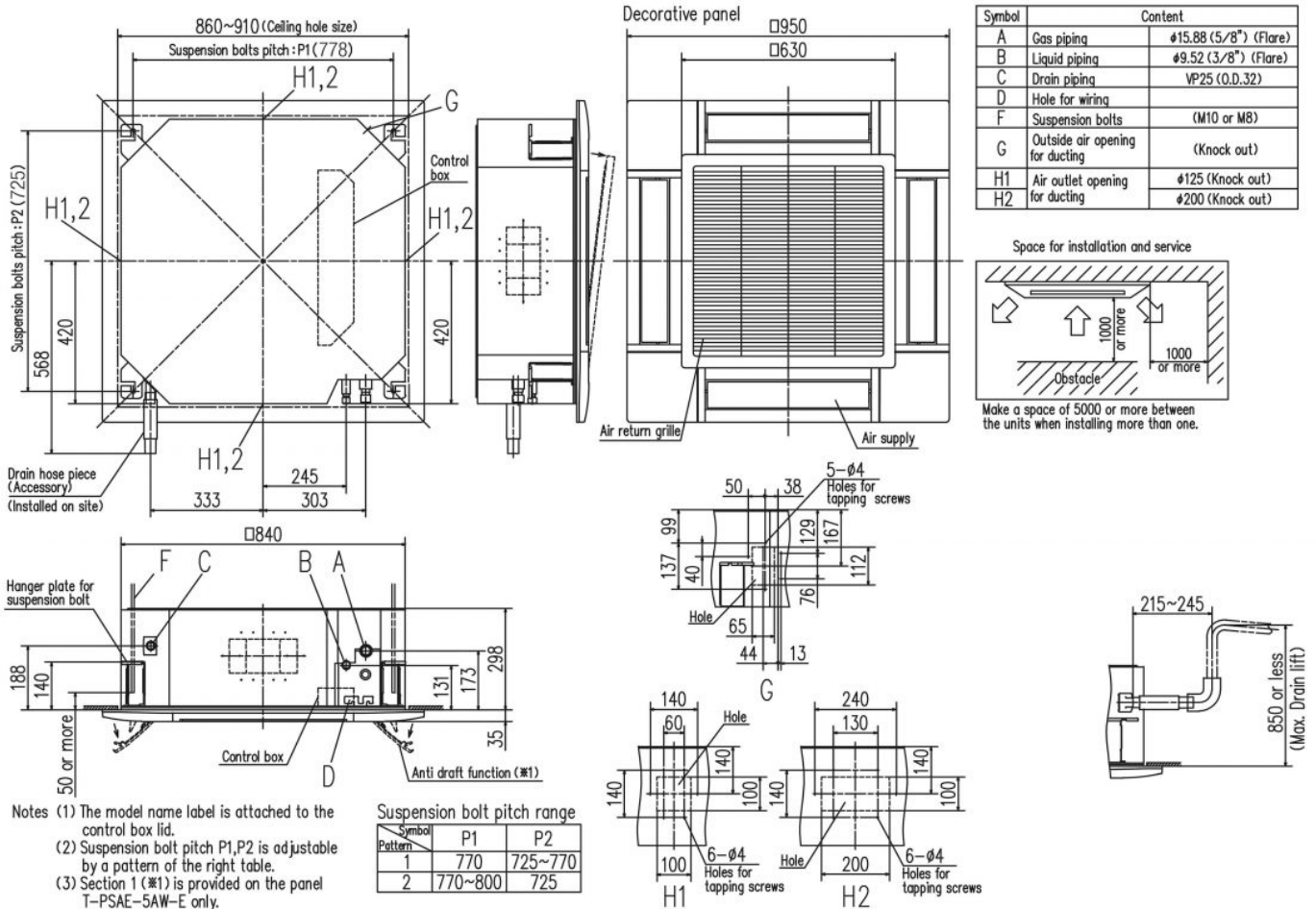


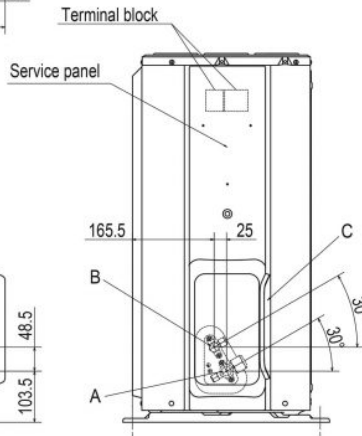
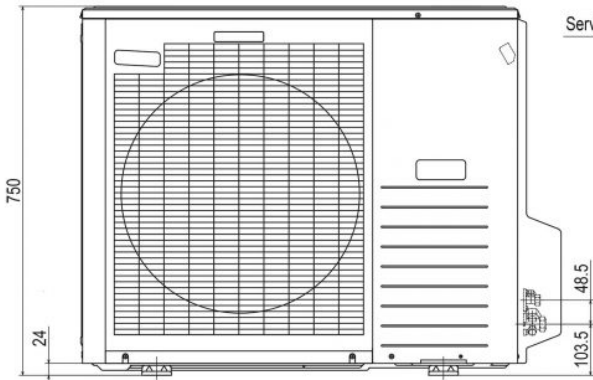
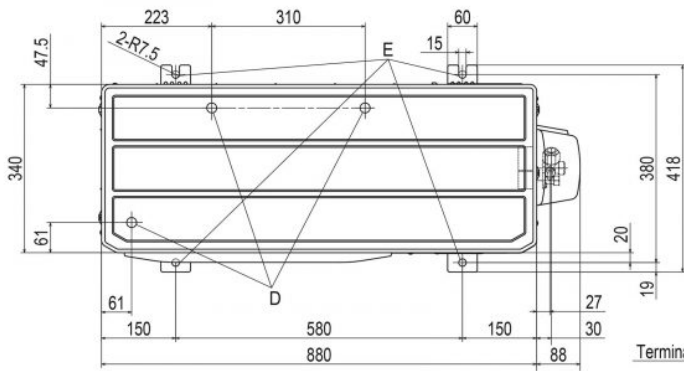
TEMPERATURE CONTROL FOR TODAY & TOMORROW



Schema tehnică

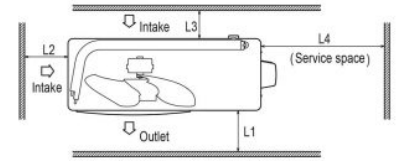
Models FDT100VH, 125VH, 140VH





Notes

- (1) It must not be surrounded by walls on four sides.
- (2) The unit must be fixed with anchor bolts. An anchor bolt must not protrude more than 15mm.
- (3) Where the unit is subjected to strong winds, lay it in such a direction that the blower outlet faces perpendicularly to the dominant wind direction.
- (4) Leave 1m or more space above the unit.
- (5) A wall in front of the blower outlet must not exceed the unit's height.
- (6) The model name label is attached on the lower right corner of the front panel.



Minimum installation space

Examples of installation Dimensions	I	II	III
L1	Open	Open	500
L2	300	250	Open
L3	100	150	100
L4	250	250	250

Symbol	Content	
A	Service valve connection (gas side)	φ 15.88(5/8") (Flare)
B	Service valve connection (liquid side)	φ 6.35(1/4") (Flare)
C	Pipe / cable draw-out hole	
D	Drain discharge hole	φ20 x 3 places
E	Anchor bolt hole	M10 x 4 places