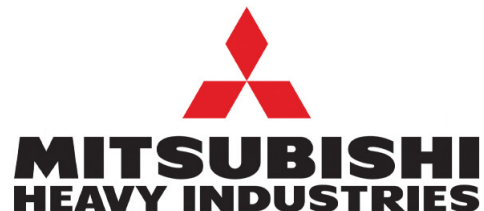




TEMPERATURE CONTROL FOR TODAY & TOMORROW



FDUM50ZSXVH

5.0 KW



Unitate internă :



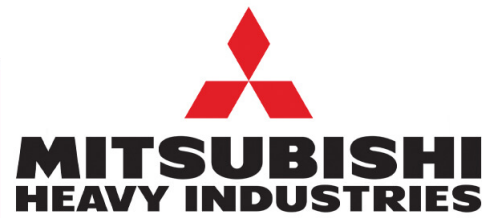
Unitate externă : SRC50ZSX-S

Specificații tehnice

Unitate internă			FDUM50VH
Unitate externă			SRC50ZSX-S
Sursă de alimentare			Monofazic 220-240V, 50Hz / 220V, 60Hz
Capacitate nominală de răcire (Min~Max)		kW	5.0 (1.1 ~ 5.6)
Capacitate nominală de încălzire (Min~Max)		kW	5.4 (0.6 ~ 6.3)
Consum de energie	Răcire/Încălzire	kW	1.38 / 1.45
EER/COP	Răcire/Încălzire		3.62 / 3.72
Curent de intrare		A	5
Amperaj maxim		A	15
Nivel putere sonoră*1	U.I. *3	Răcire/Încălzire	60 / 60
	U.E.	Răcire/Încălzire	63 / 63
Nivel presiune sonoră*1	U.I. *3	Răcire (Hi/Me/Lo/Ulo)	37 / 32 / 29 / 26
	U.E.	Încălzire (Hi/Me/Lo/Ulo)	37 / 32 / 29 / 26
Flux de aer	U.I. *3	Răcire (Hi/Me/Lo/Ulo)	13 / 10 / 9 / 8
	U.E.	Încălzire (Hi/Me/Lo/Ulo)	13 / 10 / 9 / 8
Presiune statică externă disponibilă		Pa	Standard:35 Max:100
Dimensiuni exterioare	U.I.	Înălțime / Lățime / Adâncime	280 x 750 x 635
	U.E.		640 x 800(+71) x 290
Greutate netă	U.I. / U.E.	kg	29 / 45
Refrigerant	Tip/GWP		R410A/2088
Refrigerant	Încărcare	kg/TCO2Eq	1.5/3.132
Dimensiuni țevă refrigerant	Lichid/Gaz	mm/Ø	6.35(1/4") / 12.7(1/2")
Lungime țevă refrigerant (o direcție)		m	Max.30
Diferență de nivel suportată	Unitate externă este mai sus/mai jos	m	Max.20 / Max.20
Interval de funcționare - temperatură exterioară	Răcire*2	°C	-15~46
	Încălzire		-20~24
Filtru de aer (cantitate)			(Opțional) Kit filtru : UM-FL1EF
Telecomandă (opțional)			Cu fir:RC-EX3A, RC-E5, RCH-E3 Wireless:RCN-KIT4-E2
Clasa Energetică (Răcire/Încălzire)			A+/A+
SEER			5.68
SCOP (Climat temperat)			4.36
Pdesign (răcire/încălzire(@-10°C))		kW	5.0/4.3
Consumul anual de electricitate (răcire/încălzire)		kWh/a	309/1380
Performanța pe modul încălzire			Climat temperat

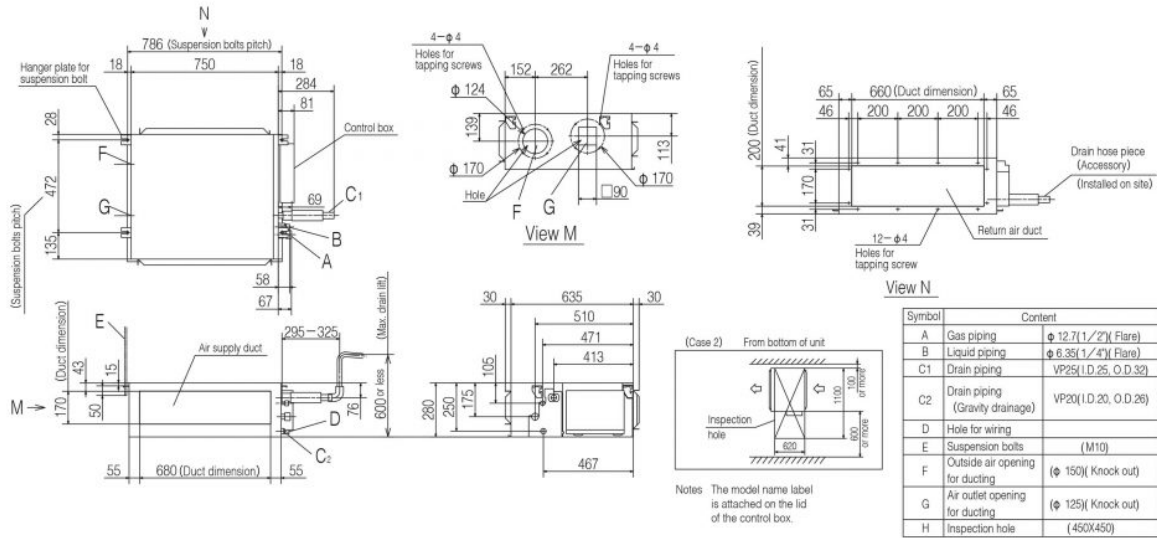


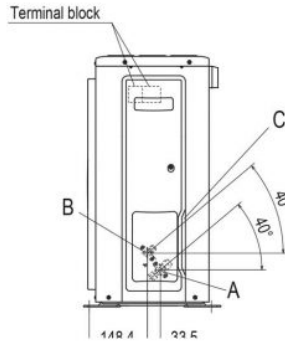
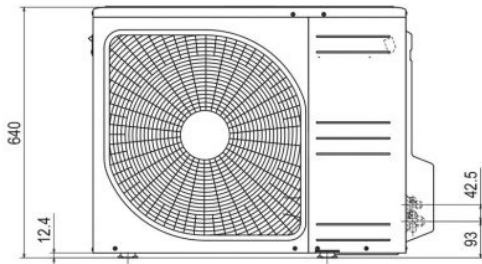
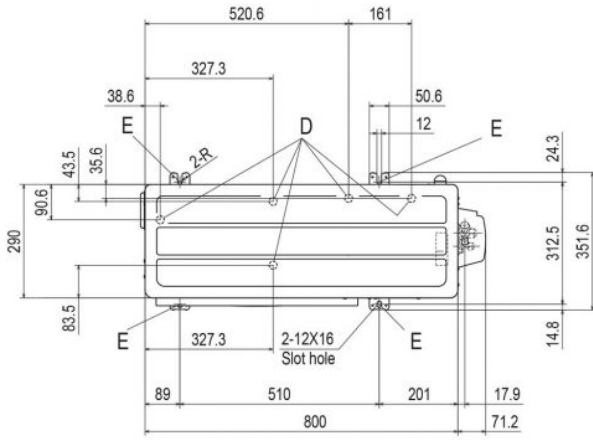
TEMPERATURE CONTROL FOR TODAY & TOMORROW



Schema tehnică

Models FDUM40VH, FDUM50VH

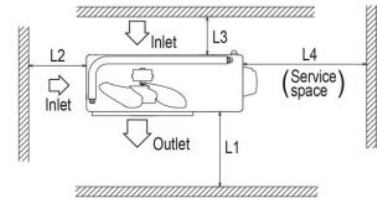




Symbol	Content	
A	Service valve connection (Gas side)	φ 12.7(1/2") (Flare)
B	Service valve connection (Liquid side)	φ 6.35(1/4") (Flare)
C	Pipe/cable draw-out hole	
D	Drain discharge hole	φ 20×5 places
E	Anchor bolt hole	M10-12×4 places

Notes

- (1) The unit must not be surrounded by walls on the four sides.
- (2) The unit must be fixed with anchor bolts. An anchor bolt must not protrude more than 15mm.
- (3) If the unit is installed in the location where there is a possibility of strong winds, place the unit such that the direction of air from the outlet gets perpendicular to the wind direction.
- (4) Leave 200mm or more space above the unit.
- (5) The wall height on the outlet side should be 1200mm or less.
- (6) The model name label is attached on the front side of the unit.



Minimum installation space

Size	Examples installation			
	I	II	III	IV
L1	Open	280	280	180
L2	100	75	Open	Open
L3	100	80	80	80
L4	250	Open	250	Open